



## SecurWave®

Integrated security system for high-risk remote surveillance sites



**GUNNEBO®**  
For a safer world



## An “intelligent” panel for multi-function and multi-site management

Banking is a high-risk sector and the market has always been concerned about security. Protecting staff, customers and suppliers on site is one of the sector’s key priorities.

As a partner of some of the leading banks for over 40 years, the Gunnebo Group has kept pace with the changes in the banking market and anticipated its customers’ demands by developing solutions that are specifically designed to mirror their business environment and how it is structured.

SecurWave® has been designed based on a concept that incorporates the full range of security functions, enhanced by local and remote management and administration tools.



## Integration of all security functions

Banks operate in a complex security environment and demand flexible, efficient security systems that allow them to work without restrictions. Using multiple systems to integrate the full range of security functions in a banking environment makes the whole system difficult to maintain.

Thanks to its in-depth understanding of critical infrastructure, technological competence and solid experience, Gunnebo can offer a comprehensive security solution that meets the requirements of banking and financial sites in terms of simplicity, flexibility, security and added-value services.

Developed specifically to respond to the problems of managing a network of bank branches, SecurWave® combines a number of functions and services: intrusion detection, access control, CCTV and safes management.

From reception areas to equipment rooms and vault rooms, a single intelligent panel manages all security functions and allows all the various systems to interact with each other.

*A core  
communications  
system*



## Intrusion Detection Module

SecurWave® is a scalable system that provides intrusion detection functionalities across the various areas under surveillance, technical alarm recovery, traceability and processing in accordance with defined procedures.

- **Advanced sensor management:** filtering, self-testing and automatic control
- **Through specific macro functions:** isolated workers, welcoming team, derogations, timed activation...



## Access Control Module

SecurWave® manages a vast range of access control solutions used to filter movements of people and accessibility to particular areas.

The access control module provides complete management of interlocking doors, incorporates single user access and interacts with all other system modules.

A single, multi-function card provides access to numerous services including entry to premises, door activation and alarm validation.

A leader in the identification/authentication field, Gunnebo makes use of most of the technologies available on the market (magnetic stripes, proximity cards, 125KHz, MSPASS, biometrics, Mifare®...).

- **Multiple-technology readers and cards:** magnetic, proximity, biometrics, radio, dallas, recovery of specific equipment via a universal interface...



## CCTV Module

SecurWave® is an open communications system that interfaces with the various recorders and CCTV systems available on the market.

- **Camera status information:** CCTV detection, loss of signal, masking
- **Recorder status:** recording or communication failures
- **Recorder commands:** activating and ending recording



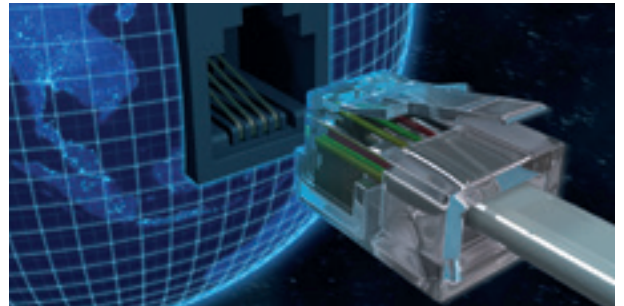
## Safes Management Module

The safes management module is used to manage electronic locking devices installed on various pieces of equipment.

It receives and analyzes lock/unlock requests and sets a time delay for opening.

The system offers the advantage of integrating and adapting to all new procedures on a continuous basis.

- **Customizable and scaleable functions:** ease of implementing changes to procedures
- **Interaction with other system functions**
- **Simple and ergonomic**



## Transmission Module

SecurWave® is multi-network and multi-protocol, and can easily adapt to migrations and developments in technology. This flexibility, together with the use of encryption functions, enables total remote maintenance in complete security.

- **Multi-network:** Ethernet-TCP/IP, PPP-TCP/IP, X25, PSTN, ISDN, GSM
- **Multi-protocol:** the SecurWave® range's native potocols, Contact ID, CEI, CESA200
- **Authentication**
- **Encryption**

### For added value

SecurWave® integrates easily into existing architecture and adapts perfectly to every kind of functional environment.



## Simplicity

### The perfect solution for every site

The banking environment is in a constant state of flux, with branch openings and renovations, updated procedures and so on. Gunnebo supports you all through your projects and researches the most appropriate solutions for your needs and requirements.

SecurWave® is available in a range of different options to suit the characteristics of each site.

- PackWave, a ready-to-use, turnkey solution designed for unmanned sites
- FirstWave, designed to meet the needs of small branches
- MidWave, perfect for medium-sized branches
- HighWave, designed for large branches and administrative buildings

## Flexibility

### At the heart of technological expertise

SecurWave® manages a vast range of access control SecurWave® is a multi-network, multi-protocol open system that can interact and communicate with other external systems.

Gunnebo's advanced expertise in the various components that make up its solution, both hardware elements and software development, allows to offer comprehensive, completely secure access to remote surveillance and local or remote maintenance of all system functions 24/7 which is compatible with all the latest technologies.

## Security

### Performance at the heart of a safer bank

Gunnebo works with you to study risk, the functions that need to be incorporated and the technical constraints you face so that we can offer you a solution that meets your requirements perfectly. Fully customized with individualized parameterization for each site or modelled for multi-site deployments, Gunnebo's approach is both highly rigorous and can be adapted to meet your specific configuration requirements.

## Service

### SecurManager®, for easy central supervision of the SecurWave® installation

SecurManager® is a single application that provides 100% secure remote management and administration of local equipment and intelligent panels across different connected sites and allows you to:

### Operate

- management of users on different systems and their rights
- remote controls

### Monitor

- alarms, instructions and daybooks
- real-time system activity

### View

- the event and alarm log through multi-criteria searches

### Administer

- operators



SecurManager® is based on a database and manages multiple systems through an intuitive, user-friendly secure web interface.

SecurManager® acts as a central repository for all security information for better management and optimum responsiveness.

SecurManager® can be used for commands, parameterization and viewing and can also generate statistical, usage, operational and management data.

SecurWave® for added value SecurWave® integrates easily into existing architecture and adapts perfectly to every kind of functional environment repository for all security information for better management and optimum responsiveness. SecurManager® can be used for commands, parameterization and viewing and can also generate statistical, usage, operational and management data.

Gunnebo is a leading provider of efficient and innovative security solutions and services to customers around the globe. It employs 5700 people in 32 countries across Europe, Asia, Africa, Australia and the Americas, and has a turnover of €580m. Gunnebo focuses its offering on Bank Security & Cash Handling, Secure Storage, Global Services and Entrance Control.

We make your world safer.

[www.gunnebo.com](http://www.gunnebo.com)



**GUNNEBO**<sup>®</sup>  
For a safer world